



# LEADING MANUFACTURERS OF BUILDING PRODUCTS

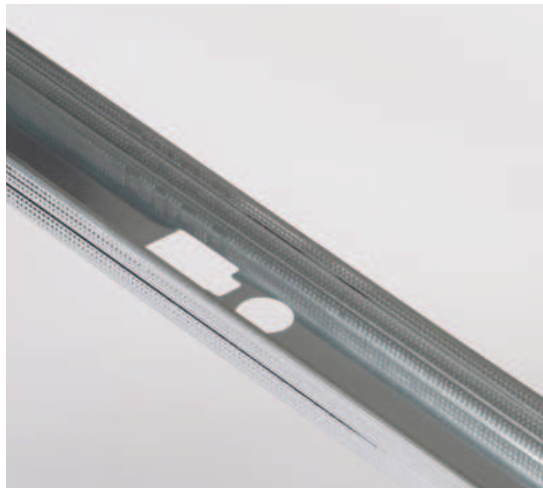
Designed and Engineered Products for all  
Lightweight and Heavy Steel Framing Applications



Canadian Sheet Steel Building Institute  
A division of the Canadian Institute of Steel Construction

IFX Metal Products facility is located at 240 Massey Rd, Guelph ON N1K 1B2 Canada. Our eco-friendly facility is over 150,000 square feet. We manufacture a complete line of steel studs, track and drywall accessories for interior and exterior wall framing. All IFX Metal Products are designed and engineered to exceed the requisite standard codes. We provide technical assistance and design capabilities to meet the requirements of any project. Our philosophy is to provide the best quality, value and customized solutions for our consumers. All custom sizes and lengths are available.

# OUR PRODUCTS



## NON LOAD BEARING STEEL STUDS (Light Gauge)

### Widths

1-5/8" 2-1/2" 3-5/8" 6"

### Standard Lengths

8' 9' 10' 12'

Custom Lengths Available

### Flange Sizes

1-1/4"

### Gauge

25

Drywall framing systems offer a lightweight, cost-effective, and fire-resistant alternative to traditional wood framing. Our non-load bearing steel framing includes steel studs and track, ensuring high-quality and ease of use in construction applications.

## LOAD BEARING STUD FRAMING SYSTEM (Heavy Gauge)

### Widths

1-5/8" 2-1/2" 3-5/8" 4" 6" 8" 10" 12" 14" Any Length

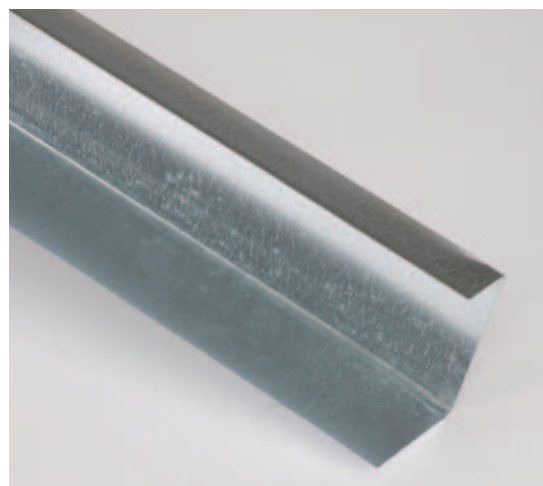
### Length

Custom Lengths Available

### Flange Sizes

1-1/4" 1-5/8" 2" 2-1/2" 3"

They are designed for curtain walls, interior & exterior walls, floor and roof joist assemblies.



## STANDARD TRACK PRODUCTS

### Widths

1-5/8" 2-1/2" 3-5/8" 4" 6" 8" 10" 12" 14"

### Length

10'

Custom Lengths Available

### Flange Sizes

1-1/4"

### Gauge

25 20 18 16 14 12

Structural Track is manufactured in various widths and lengths to accommodate your building design.

## SLOTTED DEFLECTION TRACK

### Widths

2-1/2" 3-5/8" 4" 6" 8" 10" 12" 14"

### Length

10'

Custom Lengths Available

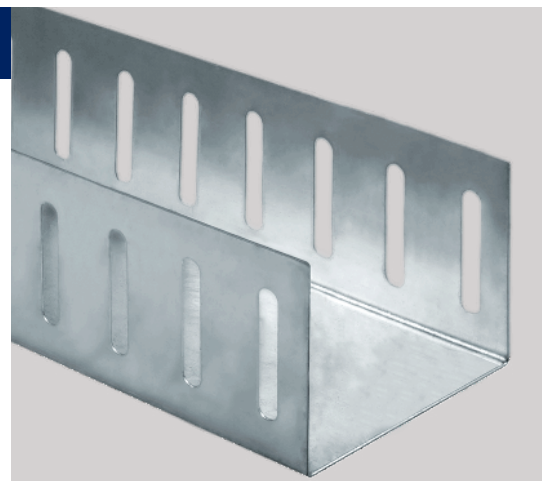
### Flange Sizes

2-1/2"

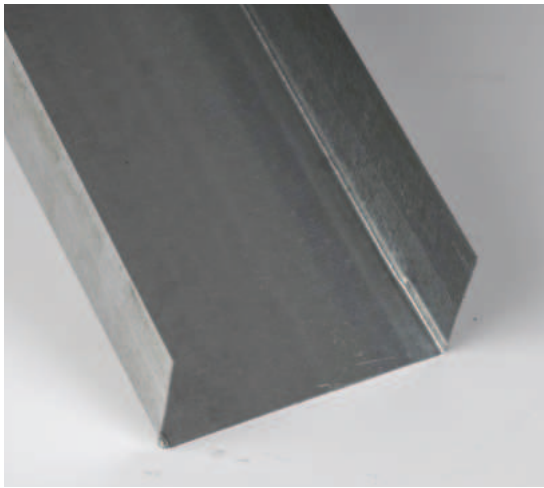
### Gauge

25 20 18 16 14 12

A cost-effective deflection system engineered for maximum flexibility, enabling quick, efficient, and adaptable stud installation.







## DEEP TRACK

### Widths

1-5/8" 2-1/2" 3-5/8" 4" 6" 8" 10" 12" 14"

### Length

10'

Custom Lengths Available

### Flange Sizes

2" 2-1/2" 3"

### Gauge

25 20 18 16 14 12

Installing the IFX Deep track easily allows to accommodate for deflection.

## RESILIENT CHANNEL

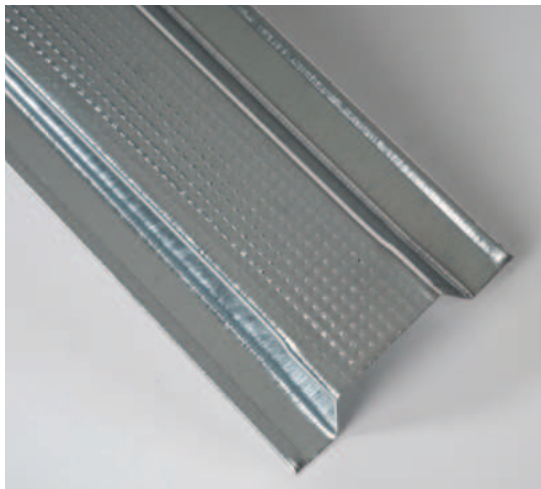
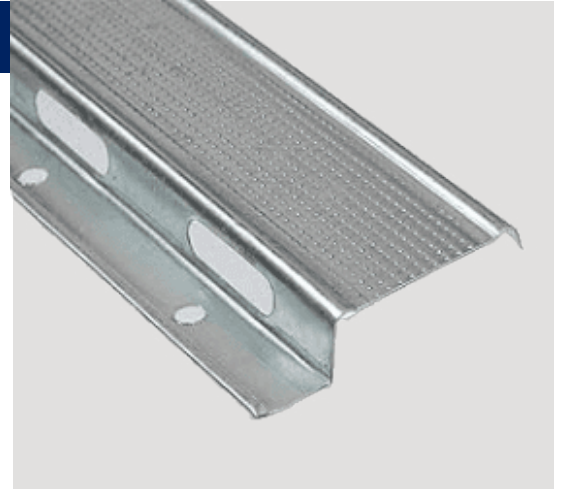
### Length

12' Custom Lengths Available

### Gauge

25

IFX resilient channel significantly improves STC ratings when applied to walls or ceilings.



## FURRING CHANNEL

### Furring Channel

7/8"

### Length

10' 12'

Custom Lengths Available

### Gauge

25 20 18

Furring channel is used to provide a means to connect your wall finish to the structure behind it.

## BRIDGING/CARRYING CHANNEL

### Widths

1-1/2" 3/4"

### Length

10' 12'

Custom Lengths Available

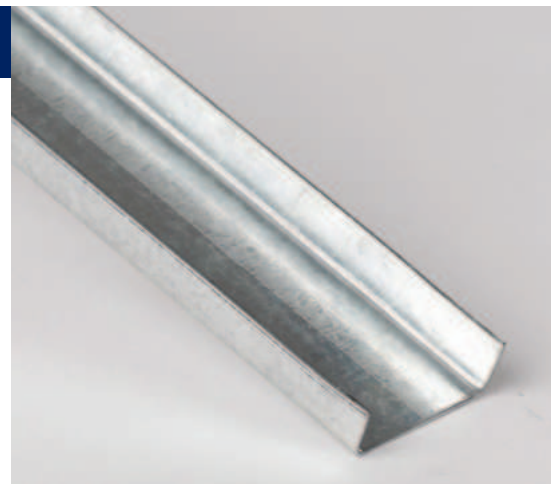
### Gauge

18 16

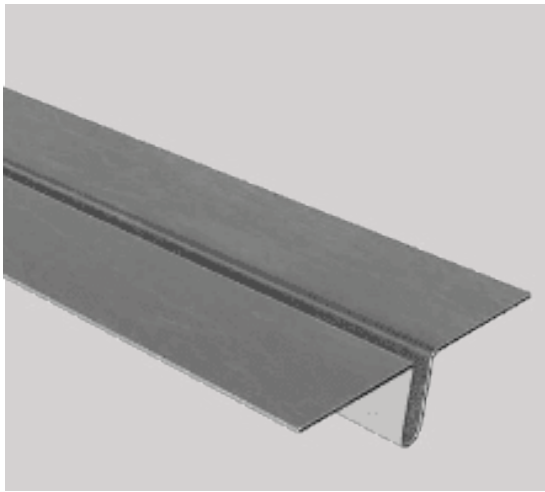
### Web

1/2" 3/4"

IFX bridging channel is used to stabilize walls by stiffening them and preventing torsional buckling of the steel stud.



**CUSTOM LENGTH AND SIZES ARE AVAILABLE FOR ALL STUDS, TRACKS AND DRYWALL ACCESSORIES.**



## WINDBRACE

### Length

11' 3"

Custom Lengths Available

### Gauge

20

Windbrace is designed to offer resistance against racking during the construction process and also allows for exterior insulation.

## 90°/130° CORNERBEAD

### Sizes

1-1/4" x 1-1/4"

### Length

8'

9'

10'

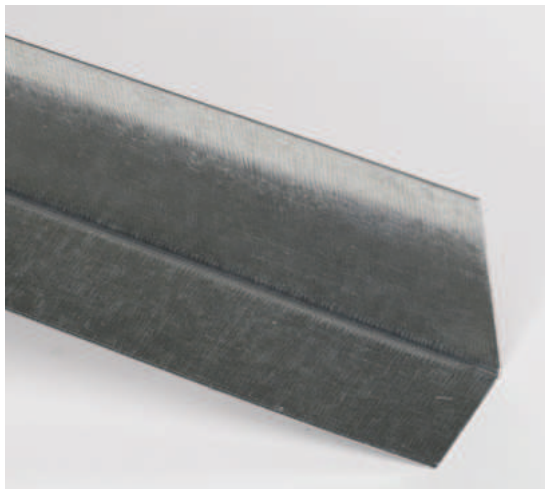
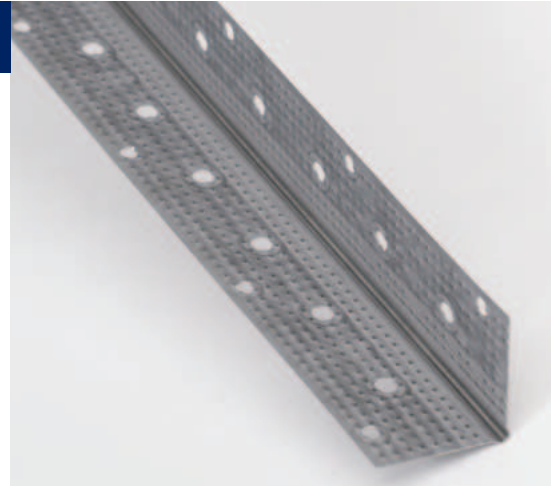
12'

### Degree

90°

130°

They are easily fastened to drywall with nails or screws, protecting corners and leaving a crisp and clean finish after the application of compound.



## L-TRACK

### Sizes

1-1/4" x 1-1/4"

1-1/2" x 1-1/2"

1" x 2"

2" x 2"

3" x 3"

### Length

10'

8'

Custom Profile and Lengths Available

### Gauge

25

20

18

16

14

12

They are available in a variety of profiles and gauges to address any application requirements.

## J-TRACK

### Width

2-1/2"

4"

6"

### Leg

2-1/4"

3"

### Length

10'

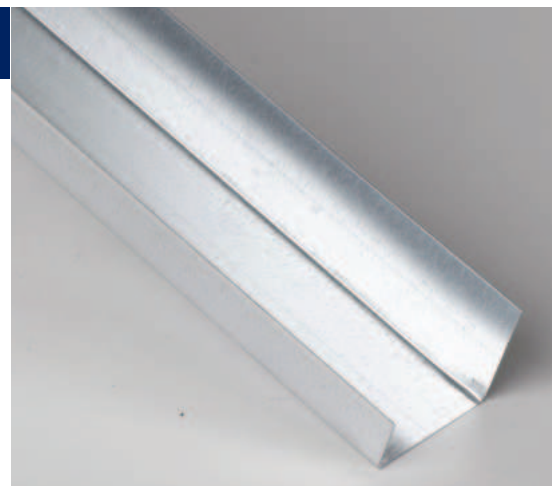
Custom Lengths Available

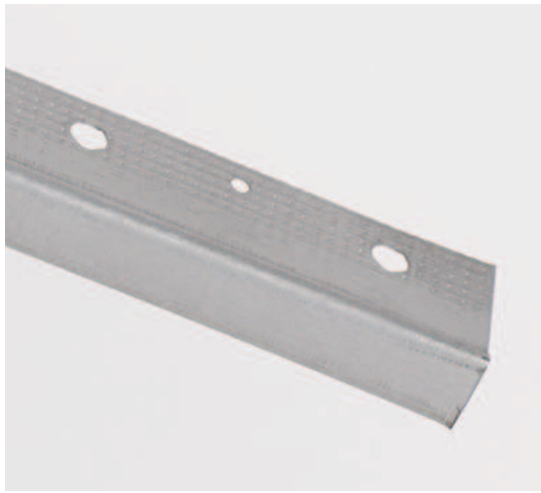
### Gauge

20

25

J-Track is used at the floor and ceiling in shaftwall assemblies 1/2" type c or 5/8" type X gypsum board.





## L TRIM

### Sizes

1/2" 5/8"

### Length

8' 10'

They are used for protection of drywall edges. The 1-1/4" leg is knurled with holes for the application of compound to provide a smooth finish.

## J TRIM

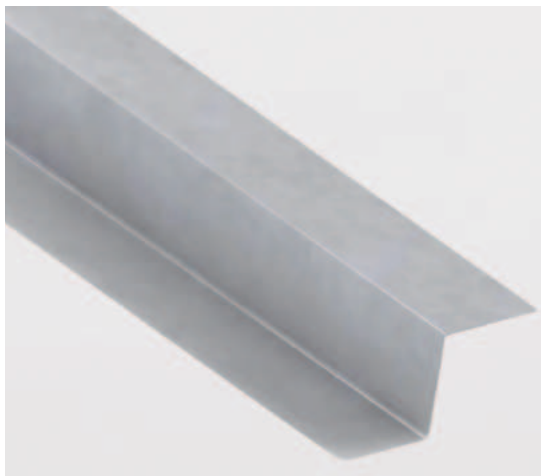
### Sizes

3/8" 1/2" 5/8"

### Length

8' 10'

It provides edge protection against window and door openings, and where wallboard butts against concrete or other materials used with drywall.



## Z-BAR

### Widths

Custom Widths/Lengths Available

2" 2-1/2" 3" 3-1/2" 4" 4-1/2" 5" 5-1/2" 6"

### Flange Sizes

### Gauge

1" 1-1/4" 1-1/2" 1-3/4" 2" 3" 25 20 18 16 14 12

Designed to hold rigid insulation in place and provide a surface to fasten finishing drywall sliding or other materials.

## SHAFTWALL/CH STUD

### Width

2-1/2" 4" 6"

### Length

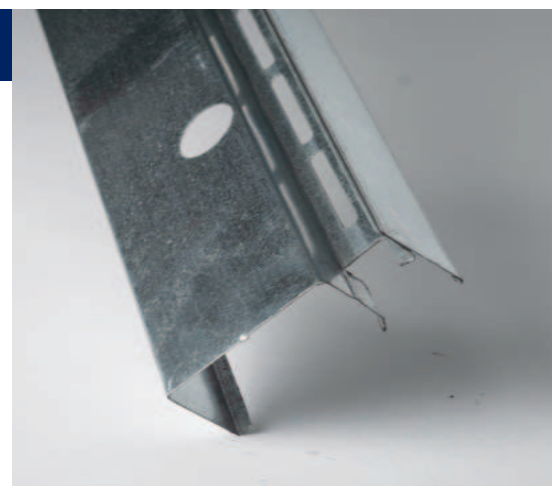
8' 9' 10' 12' 14' CUSTOM

### Gauge

20 25

Custom Lengths Available

Used in shafts containing elevators, ducts, piping, air shafts and similar construction applications.





## U-FLEX TRACK

### Widths

2-1/2"

3-5/8"

6"

### Length

8'

Custom Lengths Available

### Flange Sizes

1-1/4"

### Gauge

25

20

Used when curved profile is needed.

## BRIDGING CLIP

### Length

3-1/4"

5-1/2"

7-1/2"

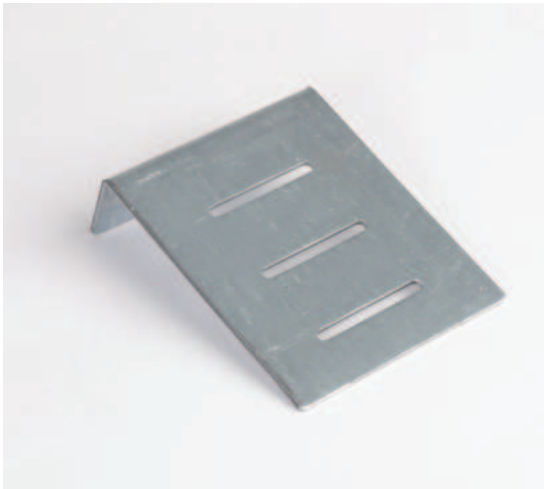
### Width

1.5"

### Gauge

16

Unique design engineered for quick and sturdy installation of IFX Bridging Channel, both load bearing and non-load bearing applications.



## WEBSLIDE CLIP

### Length

4.5"

### Width

1.5"

3.5"

5.5"

They are used on exterior curtain wall studs to allow for building structure deflection at the top of the wall, it accommodates stand off situations where required.

## DEFLECTION SIDE CLIP

### Length

5.87"

3.5"

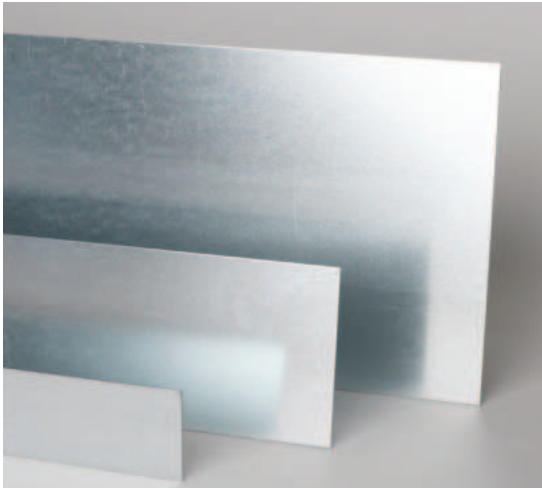
### Width

3"

They are used on exterior curtain wall studs to allow for building structure deflection at the top of the wall.







## FLAT STRIPS

### Length

10' Custom Widths/Lengths Available

### Gauge

25 20 18 16 14 12

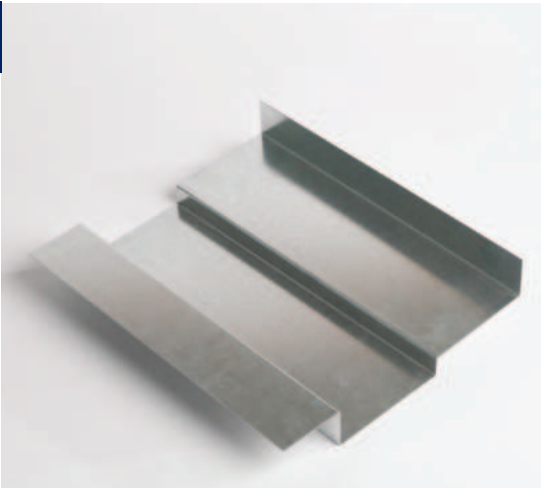
Used when the backing is needed for fastening of handrail, cabinets, signages etc... size available upon request.

## SPECIAL PROFILES

### Gauge

25 20 18 16 14 12

Special profiles and custom brake shapes available upon request. An extensive selection of thickness, shapes and lengths.



## HANGER WIRE

### Length

12'

### Gauge

9 12 3/16

Hanger wire/Pencil Rods used for suspension of drywall ceilings and ceiling grid system.

## TIE WIRE

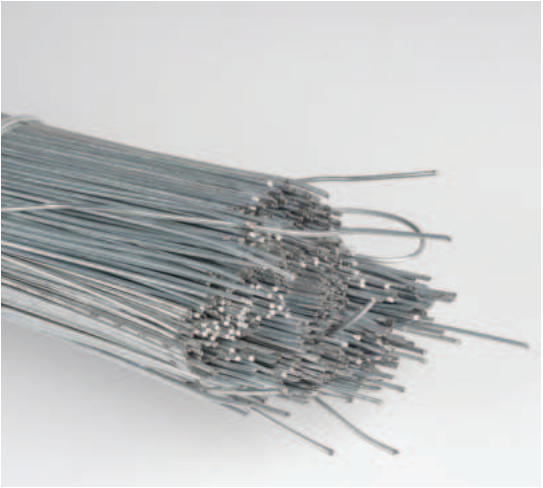
### Length

27"

### Gauge

18

Tie Wire, comprising 18-gauge galvanized soft annealed wire, plays a crucial role in drywall and plaster construction.





# OUR PROJECTS





**WE ARE  
CSSBI CERTIFIED.**

## **CONTACT US:**

(877) 814-1798

[info@ifxgroup.ca](mailto:info@ifxgroup.ca)

[www.ifxgroup.ca](http://www.ifxgroup.ca)

240 Massey Rd, Guelph, ON N1K 1B2

---

**CUSTOM LENGTH AND SIZES ARE AVAILABLE FOR  
ALL STUDS, TRACKS AND DRYWALL ACCESSORIES.**





Canadian Sheet Steel Building Institute  
A division of the Canadian Institute of Steel Construction



IFX Metal is proudly affiliated with IFX Capital, bringing together expertise in both metal products and other industries solutions for a wide range of projects.



## STOCK REBAR OPTIONS ALSO AVAILABLE.

- Rebar sizes from 10m to 55m in Black, epoxy and galvanized.
- Accurately cut and bent to order.
- Welded Wire Mesh sheets and rolls.
- In house Estimating.
- Detailing/Shop Drawings.
- On-time Delivery.

**BAR DESIGNATION NUMBER (BAR SIZE):**

10M	15M	20M	25M	30M	35M	45M	55M
-----	-----	-----	-----	-----	-----	-----	-----

## CONTACT US:

(877) 814-1798

[info@ifxgroup.ca](mailto:info@ifxgroup.ca)

[www.ifxgroup.ca](http://www.ifxgroup.ca)

240 Massey Rd, Guelph, ON N1K 1B2